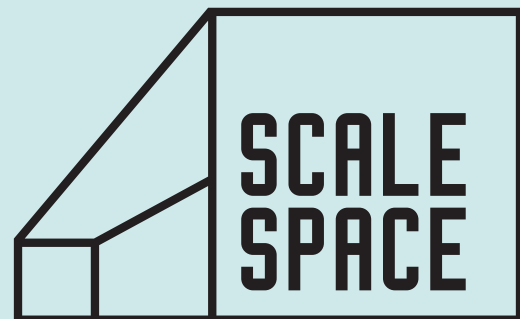


# More than just a workspace

**Flexible office space for  
ambitious companies to  
focus and grow.**

The Poynt  
45 Wollaton Street  
Nottingham  
NG1 5FW





# We provide workspace for ambitious companies to focus and grow.

Powered by the UK's leading digital venture builder, Blenheim Chalcot, our spaces bring together the people, services and opportunities to help you succeed.

## **BUILT FOR BUSINESSES LIKE YOURS**

- Truly all-inclusive, competitive pricing, with no upfront deposit required
- Space designed around you, with bespoke branding, flexible finish and room to expand
- Complimentary use of our fully kitted meeting rooms, phone booths and event spaces
- Access to expertise from trusted sources and connections to like-minded innovators

# Workspace options

We understand workspace can be a huge problem for growing startups. We offer a wide range of options so you can find the right level of flexibility to accommodate your growth. With an all-inclusive price and no unexpected bills, you can plan ahead with confidence.

Add to that, complimentary high-spec meeting space, a vibrant café, and thoughtfully designed break out areas, there's only upsides.



## FLEXI-SPACE

## OFFICE SPACE

## GREAT FOR:

	Desk	Zone	Private	Suite
No deposit	●	●	●	●
Fully serviced, all-inclusive	●	●	●	●
Meeting room access	●	●	●	●
Branded			○	○
Custom fit				○

- Tech startups and scaleups
- Creative and digital services
- Corporate innovation teams

● Standard  
○ Optional

# Workspace options



## FLEXI-SPACE

Just £325 a desk

With terms as short as just three months, flexi-space allows you to buy by desk, bank or partition your own zone; this solution is cost-effective, with the flexibility fast-growing businesses need.

Perfect for teams up to 20, complete with individual desks, chairs, secure lockers, and full use of our wonderful common business facilities.



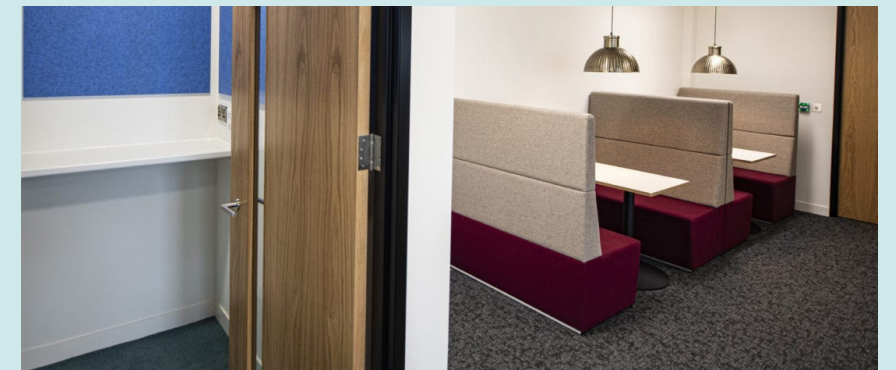
## PRIVATE OFFICE

From £3,500 a month

Workspace for teams of 10+ with just a 12 month commitment. Private, secure and all yours.

Free yourself from the minutiae of lengthy paperwork, service fit outs and furnishings. With us you'll be up and running from day one, in a space you can invite your customers to with confidence.

Plug your team straight into our curated community, we want to deliver you a space you're proud of.



## OFFICE SUITE

From £7,000 a month

Want a little extra?

Talk to us about our custom-fit office suites. Workspace to suit your way of working, with your brand front and centre.

Available to teams of 20+. Consult our experts to add your own break out areas and meeting space, or save costs by looking at adding agile workstations.

# Why we're different

As part of the UK's leading digital venture builder, Blenheim Chalcot, we have over 20 yrs' experience helping scale start-ups. We know what it takes to make a successful business, and now we've created a workspace to help you build yours.

We've worked hard to make the right connections, find the right answers, and curate the right events so you don't have to.



## **NO HIDDEN EXTRAS**

Forget business rates, utilities and cleaning. Enjoy limitless printing, as well as complimentary use of our meeting rooms and event spaces.

## **PLUG IN AND GO**

24/7 access, super-fast broadband and high specification meeting rooms, you'll have everything you need to get on with business.

## **HELP ON HAND**

Whether you need Reception services, IT know-how, or just a freshly brewed coffee, we'll quickly feel like an extension of your team.

## **DESIGNED AROUND YOU**

Make your team feel at home with our design services. From bespoke branding and build, we're here to help.

## **PRIVATE OFFICE SPACES**

10-60 person private offices available. Call today to take advantage of some great early bird offers.





# We're ideally located

Scale Space Nottingham enjoys a sought after city centre location in the heart of Nottingham's growing tech industry.

The city is home to many scaling tech businesses, including Liberis, UniDays, Oakbrook Finance and ENSEK. It's a great place to meet industry leaders and network with potential collaborators and investors.

## GETTING HERE

- Discount on local car parking
- Tram stop outside the Theatre Royal
- Nottingham train station 0.5 mile



# Coming soon...

With growing demand for private offices, we are reconfiguring our space to create more availability.

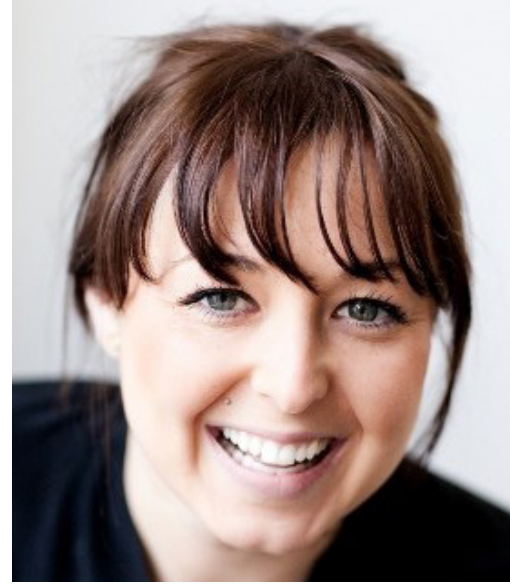
- Private Offices
- Sizes from 10 – 60 person available
- Options to personalise your space

Get in touch to take advantage of some great early bird offers.





# Let's keep this conversation going...



Jenna Bilby, Business Manager

## GET IN TOUCH

0115 795 0141

[jenna.bilby@scalespace.co.uk](mailto:jenna.bilby@scalespace.co.uk)

[scalespace.co.uk/nottingham](https://scalespace.co.uk/nottingham)

## SCALE SPACE NOTTINGHAM

The Poynt, 45 Wollaton Street,  
Nottingham NG1 5FW

